



"Evolving since 1886."

# Frogtown Philatelist

The Official Journal of the Stamp Collectors Club of Toledo

P.O. Box 2, Maumee, OH 43537-0002

www.toledostampclub.org

## June, 2019

Vol. 2, #10

Inside this issue:

Where in the world is . . .	2
Nathan Hale	3
U.S. Polo Association	3
Local Show Information	4
The Back Page	4

## Directory

President	Gene Stutzenstein
V.P.	Charles Hablitzel
Treasurer	Cliff Campbell
Secretary	John Mann
Auctioneer	Gene Stutzenstein
Computer Whiz Kid	John Zwyer
Newsletter	John Mann

## Where we've been.

### May 2

There were 26 members on hand, despite the NBA playoffs, the Stanley Cup, and MLB. We had the usual three item sell-it-yourself, and then the mugging occurred. The membership got "worked over" to help with programming for next year. Thank you to those that "volunteered" for being good natured and contributing to the future success of our club. Our best programs come from member participation. Speaking of

which, technical difficulties hampered an already lengthy "Stamping the National Parks" slideshow. Fortunately there was a good supply of no-doze and 12-hour energy to keep everybody awake.

The real highlight of the evening was the installation of our newest life members, Dottie and Harry Winter. Thank you for all you have done in assisting with the activities of our club. Dottie and Harry have provid-

ed exceptional service not only to our club, but also to Ann Arbor and Plymouth, as well as to national organizations. They have energetically promoted stamp collecting throughout the Midwest. SCCT life memberships are honor-awarded. Congratulations Dottie and Harry.

### May 16

Thirty-two members were on hand for a 185 lot auction that we got through in 1 1/2 hours. Thanks, Gene.

## THE VOTE IS DONE!!!

Wood County's 200th Anniversary

Is Toledo Stamp Expo '20's show theme.

The theme is chosen from events at 25 year increments from the year of the show. This year club members and public voted on next year's show theme. Voting results can be found on the home page.

## Where we're going.

### June 6

The annual picnic at Woodland Park in Perrysburg, located at the corner of 795 (E. Indiana) and E. Boundary. Enter from E. Boundary. We will be at the pavilion, so we are on whether there be rain or sunshine. Bring a dish to share, we will provide the chicken, drinks and etc. Door prize donations are always appreciated. The last ticket drawn *really* appreciates the donations :) The feed bag ties on at 6:00.



## Where in the World is . . .

Brazil? officially the Federative Republic of Brazil is the largest country in both South America and Latin America. At 3.2 million square miles and with over 208 million people, Brazil is the world's fifth-largest country by area and the fifth most populous. The capital is Brasília, and the most populated city is São Paulo. The federation is composed of the union of the 26 states, the Federal District, and the 5,570 municipalities. It is the largest country to have Portuguese as an official language and the only one in the Americas.

Bounded by the Atlantic Ocean on the east, Brazil has a coastline of 4,655 mi. It borders all other South American countries except Ecuador and Chile and covers 47.3% of the continent's land area. Its Amazon River basin includes a vast tropical forest, home to diverse wildlife, a variety of ecological systems, and extensive natural resources spanning numerous protected habitats. This unique environmental heritage makes Brazil one of 17 megadiverse countries, and is the subject of significant global interest and debate regarding deforestation and environmental protection.



The land now called Brazil was claimed for the Portuguese Empire on 22 April 1500, with the arrival of the Portuguese fleet commanded by Pedro Álvares Cabral. The Portuguese encountered indigenous peoples divided into several tribes, most of whom spoke languages of the Tupi-Guarani family, and fought among themselves. Though the first settlement was founded in 1532, colonization effectively began in 1534, when King John III

of Portugal divided the territory into the fifteen private and autonomous Captaincy Colonies of Brazil.

Brazil is the only country in the world that has the equator and the Tropic of Capricorn running through it. Brazilian topography is also diverse and includes hills, mountains, plains, highlands, and scrublands. Much of the terrain lies between 660 ft and 2,600 ft in elevation. The main upland area occupies most of the southern half of the country. The northwestern parts of the plateau consist of broad, rolling terrain broken by low, rounded hills.



Brazil has a dense and complex system of rivers, one of the world's most extensive, with eight major drainage basins, all of which drain into the Atlantic. Major rivers include the Amazon (the world's second-longest river and the largest in terms of volume of water), the Paraná and its major tributary the Iguazú (which includes the Iguazu Falls), the Negro, São Francisco, Xingu, Madeira and Tapajós rivers.

The climate of Brazil comprises a wide range of weather conditions across a large area and varied topography, but most of the country is tropical.

Agriculture and allied sectors like forestry, logging and fishing accounted for 5.1% of the gross domestic product in 2007. Brazil is one of the largest producer of oranges, coffee, sugar cane, cassava and sisal, soybeans and papayas. Brazil has been the world's largest producer of coffee for the last 150 years.



The industry - from automobiles, steel and petrochemicals to computers, aircraft and consumer durables - accounted for 30.8% of the gross domestic product. Industry is highly concentrated in metropolitan São Paulo, Rio de Janeiro, Campinas, Porto Alegre, and Belo Horizonte. Brazil has become the fourth largest car market in the world. Major export products include aircraft, electrical equipment, automobiles, ethanol, textiles, footwear, iron ore, steel, coffee, orange juice, soybeans and corned beef. In total, Brazil ranks 23rd worldwide in value of exports.



June 6, 1755

Nathan Hale

Nathan Hale (June 6, 1755 - September 22, 1776) was an American soldier and spy for the Continental Army during the American Revolutionary War. He volunteered for an intelligence-gathering mission in New York City but was captured by the British and executed. Hale has long been considered an American hero and, in 1985, he was officially designated the state hero of Connecticut.

During his mission, New York City (then the area at the southern tip of Manhattan around Wall Street) fell to British forces on September 15 and Washington was forced to retreat to the island's north in Harlem Heights (what is now Morningside Heights). On September 21, a quarter of the lower portion of Manhattan burned in the Great New York Fire of 1776. The fire was later widely thought to have been started by American saboteurs to keep the city from falling into British hands, though Washington and the Congress had already denied this idea. It has also been speculated that the fire was the work of British soldiers acting without orders. In the fire's aftermath, more than 200 American

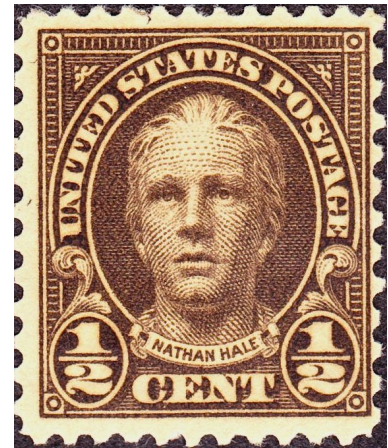
partisans were rounded up by the British.

An account of Nathan Hale's capture was written by Consider Tiffany, a Connecticut shopkeeper and Loyalist, and obtained by the Library of Congress. In Tiffany's account, Major Robert Rogers of the Queen's Rangers saw Hale in a tavern and recognized him despite his disguise. After luring Hale into betraying himself by pretending to be a patriot himself, Rogers and his Rangers apprehended Hale near Flushing Bay in Queens, New York. Another story was that his Loyalist cousin, Samuel Hale, was the one who revealed his true identity.

British General William Howe had established his headquarters in the Beekman House in a then rural part of Manhattan, on a rise between what are now 50th and 51st Streets between First and Second Avenues, near where Beekman Place commemorates the connection. Hale reportedly was questioned by Howe, and physical evidence was found on him. Rogers provided information about the case. According to tradition, Hale spent the night in a greenhouse at the mansion. He requested a Bible; his request was denied.

Sometime later, he requested a clergyman. Again, the request was denied.

According to the standards of the time, spies were hanged as illegal combatants. On the morning of September 22, 1776, Hale was marched along Post Road to the Park of Artillery, which was next to a public house called the Dove Tavern (at modern-day 66th Street and Third Avenue), and hanged. He was 21 years old.



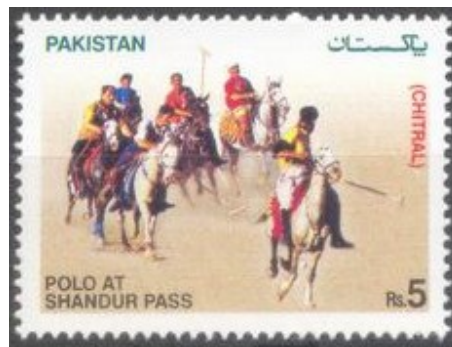
June 6, 1890

United States Polo Association Formed



Established in 1890, the USPA provides resources to over 4,500 individual members and 250 polo clubs across the U.S. and Canada, including promoting the game of polo, coordinating the activities of its Member Clubs and Registered Players, arranging and supervising polo tournaments, competitions and games and providing rules, handicaps and conditions for those tournaments, competitions and games, including the safety and welfare of participants and mounts. The first

chairman of the USPA was H.L. Herbert (1890-1921). The first chief executive officer was Peter J. Rizzo (2011-2015).



The USPA has established a number of programs for new players to learn the sport in the U.S. including Regional Polo Centers and clubs that host schools and lessons across the country. In 2010, the USPA created Team USPA, a program to enhance and grow the sport of polo in the U.S. by iden-

tifying young, talented American players and providing mentored training and playing opportunities leading to a pool of higher rated amateur and professional players. The organization also coordinates youth polo programs and competitions through Interscholastic/Intercollegiate polo and Pony Club.



# Stamp Collector's Club of Toledo

All meetings are held at the Perrysburg Masonic Building, 590 E. South Boundary, Perrysburg, OH 43551. Members begin to gather at about 6:30, with the business meeting to begin at 7:00. Programs or activities follow the business meeting. Guests are always welcome to attend.

## Internet Links

Linn's [www.linns.com](http://www.linns.com)  
OPHS [www.ohiopostalhistory.com](http://www.ohiopostalhistory.com)  
APS [www.stamps.org](http://www.stamps.org)  
ATA [www.americantopicalassn.org](http://www.americantopicalassn.org)  
USSS [www.usstamps.org](http://www.usstamps.org)  
[www.stampfinder.com](http://www.stampfinder.com)  
[www.zillionsofstamps.com](http://www.zillionsofstamps.com)

## Local Shows

Blue Ribbon Show, Third Sunday, 9:30-3:30. St. Clement's Hall, 3030 Tremainsville Rd., Toledo.

COLOPEX 2019, June 14-15, St. Andrews Parish Hall,

1899 McCoy Rd., Columbus, OH. Friday 10-6, Saturday 10-3.



We're on the web!  
[www.toledostampclub.org](http://www.toledostampclub.org)

## SCCT CONTACT INFORMATION

**Meetings:** Phoenix Masonic Lodge, 590 E. South Boundary Street, Perrysburg, Ohio

**Mailing:** Stamp Collectors Club of Toledo, PO Box 2, Maumee, Ohio 43537-0002

**Web Site:** [www.toledostampclub.org](http://www.toledostampclub.org)

**Email:** [John6125@earthlink.net](mailto:John6125@earthlink.net)  
[webmaster@toledostampclub.org](mailto:webmaster@toledostampclub.org)

**Facebook:** <https://www.facebook.com/The-Stamp-Collectors-Club-of-Toledo-1372536332845589/>

## The Back Page

## Be a Philatelic Freelance

### Be a Philatelic Freelance

#### A Plea For General Collecting

I am aware that the burning question, "Specialist or General Collector," has, from time to time, been discussed in the philatelic press, and debated in many Societies, but I am optimistic enough to hope that my particular "slant" on the subject may prove helpful to stamp collectors in general, especially those who have passed the beginners stage and who are toying with the idea of cutting out a lot of their countries and joining the select circle of one-track mind collectors known to us lesser fry as specialists.

I suppose one of the first questions to ask yourself is — do you want your collection to be of really general interest, not only to collectors, but an incentive to non-collectors, and a real advertisement for the hobby; or do you wish to limit its interest to the very few? All collectors should be missionaries, ready to convert others to come in and join the fun. But

just imagine trying to get a would-be collector excited over ten sheets of plated 1d reds, or pages of stamps looking all alike until carefully examined through a magnifying glass, when such exciting differences as hair lines and a few odd dots and dashes reveal themselves in all their glory! I can picture his look of blank astonishment and his plaintive remark, "I thought you said your hobby was interesting!" He is much more likely to be impressed by a variety of issues, grave and gay, from many parts of the world, with pictures of famous men, famous spots, monuments, maps and the hundred and one things a general collection can show.

Far be it from me to decry the valuable contribution made to philately by the specialists, and the facts and data which their careful research have brought to light, but I just don't happen to have that type of mind.

I remember at the first philatelic society meeting I attended, one or two of the old hands asking me, "What is your country?"

and my somewhat biblical reply, "The round world and all that therein is!" They smiled pityingly and knowingly and replied, "You wait, my lad: you'll change your mind; they all say that at first." But I waited and haven't, and the result is, I modestly hope, a collection full of interest not only to collectors generally, but also to those outside our charmed circle.

Article by Theo. Hardwick, *Stanley Gibbons Monthly Journal*, October 1944.

Do you show your collection to non-collectors? Would it generate interest from the non-collector point of view? What part of your collection would you show them?

If asked what you collect, what would your answer be? General worldwide? A series of countries? A series of topics?

My answer is "Anything that strikes my fancy." Would it generate interest in a non-collector? Depends on what I get out. Position plate number Prexies, probably not. Kennedy, Halloween, FSAT, British Antarctic Territory, etc., probably yes.